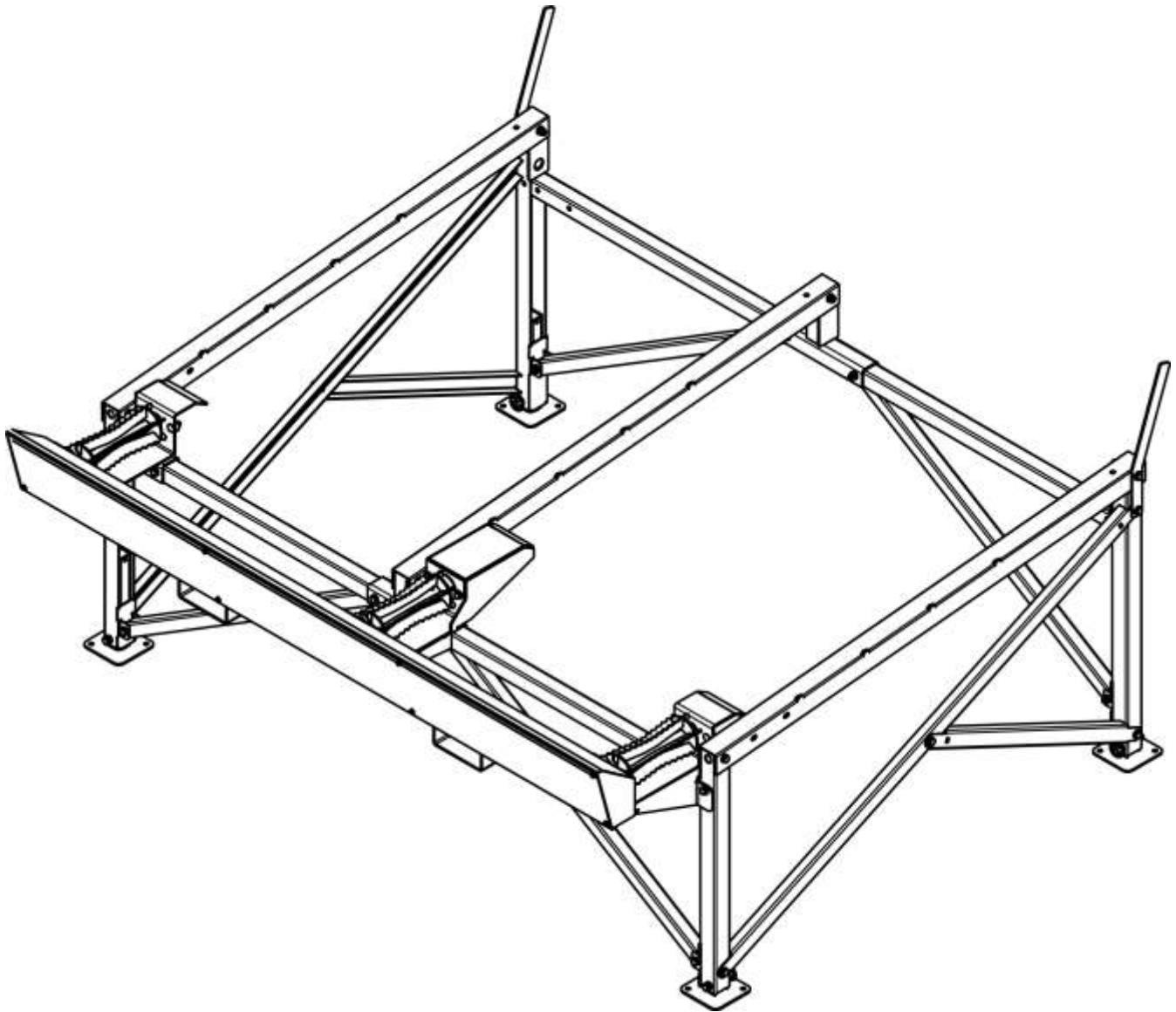




Log rack ST2440

Edition 1-2010



Instruction manual



7630 Åsen, Norway

Tlf: +47 74 01 59 00

Fax: +47 74 01 59 10

Foretaksnr: NO 980.400.212.mva

www.duun.no

Guarantee

Duun Log Rack ST2440 has a 12 month guarantee against defects in materials and workmanship.

Parts that are not originally manufactured by Duun Industrier AS, for example shafts, bearings etc. are subject to these suppliers' guarantees and terms.

Parts that are considered to be wearing parts are not part of the basis of the guarantee - these have been specified in a separate survey on the bottom part of this page.

In cases where a repair is considered to be covered by the guarantee, the representative must inform the supplier's representatives that the repair is intended executed on the basis of the guarantee.

In this context, the following information must be recorded:

- Product name
- The product's serial no. (see the machine identification pp. 6 and 7]
- Date of sale
- The product owner's telephone no.
- Dealer with address, telephone no.

In case of such a repair, the supplier is presented with a claim within 3 weeks after the repair date.

Replaced parts are to be kept until a decision has been made with reference to the claim and the replaced parts are to be forwarded to Duun Industrier for assessment if so required.

As the employment of the product is beyond our control, we may only guarantee the quality and do not accept liability for the product's general performance.

Duun Industrier reserves the right to modify the design and specifications and/or make alterations and improvements without notification.

What is not included by the guarantee

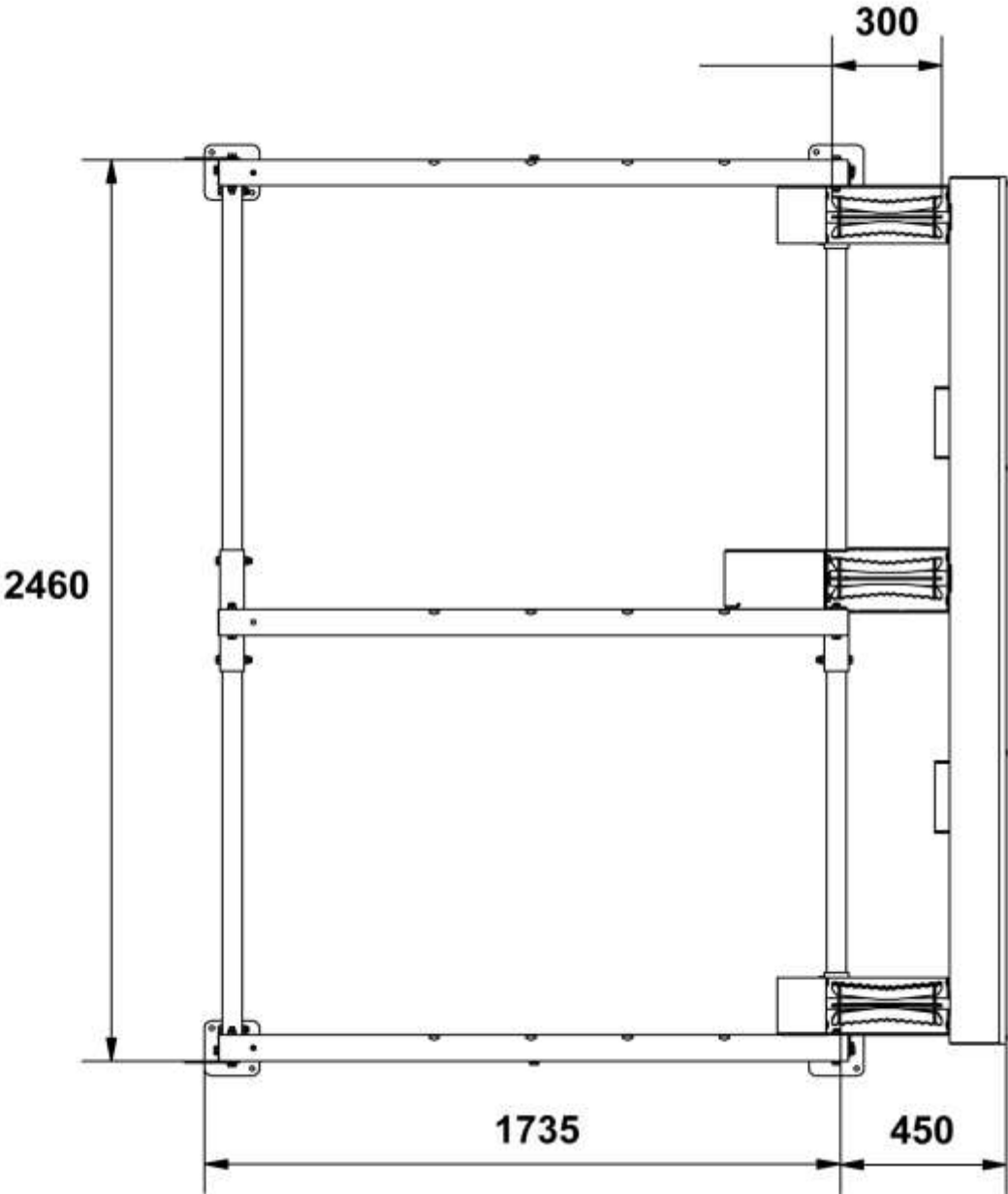
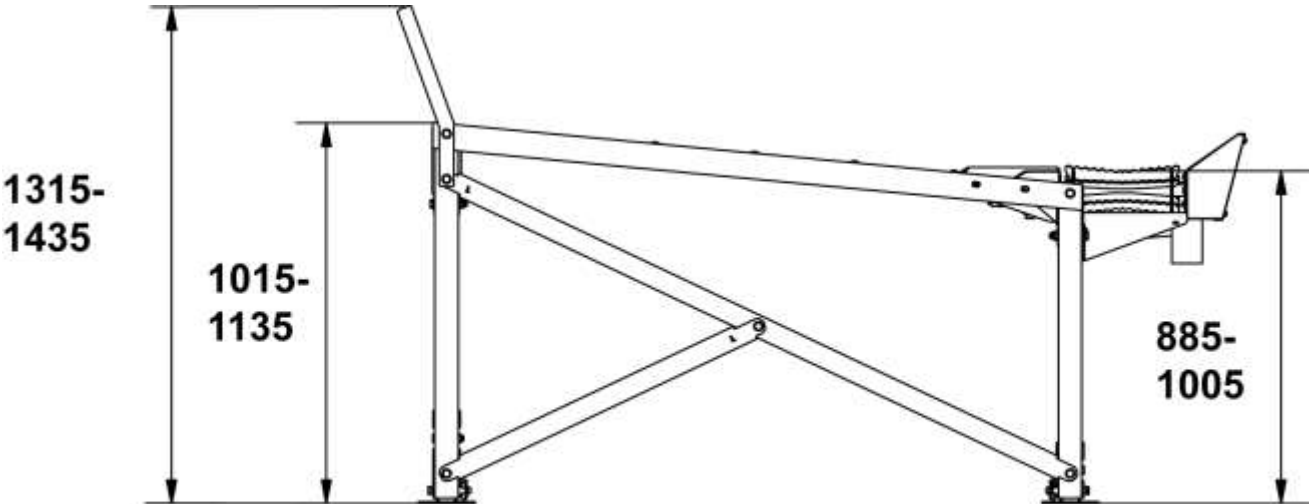
- The guarantee does not cover economic loss as a consequence of interruptions.
- The guarantee does not cover consequential loss due to defects.
- The guarantee does not cover defects or damage caused by misuse and use that is not in accordance with the instruction manual's specifications and guidelines.

Contents

1. Terms og guarantee	P. 2
2. Contents	P. 3
3. Technical data sketch	P. 4
4. Technical data text	P. 5
5. Introduction	P. 7
6. Safety illustrations	P. 8 and 10
7. Safety text	P. 9 and 11
8. Supplementary equipment	P. 12, 13
9. Fitting of hydraulics output	P. 14
10. Fitting instructions	P. 15
11. Parts catalogue	P. 17-25
12. Number index	P. 26-27

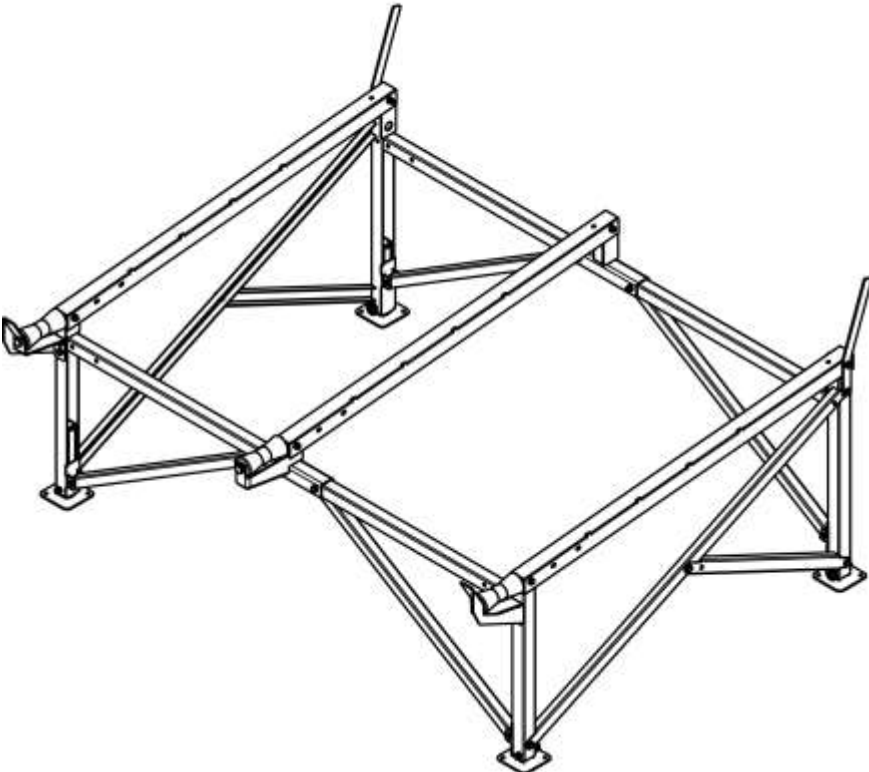
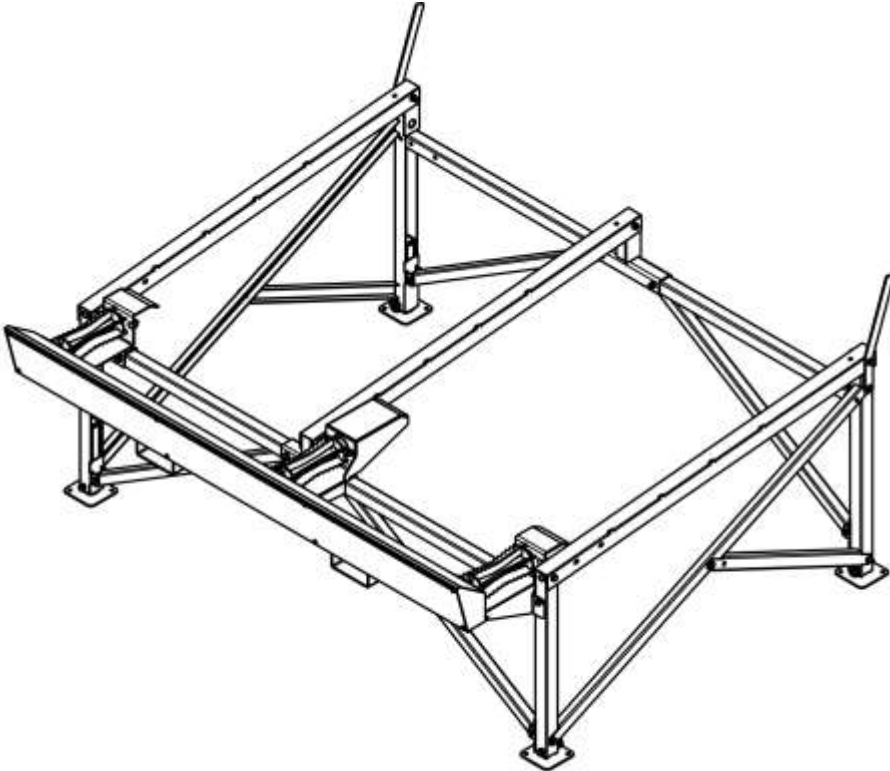
Technical data

Sketch



Properties	
Weight:	
Rack	103kg
Hydraulic parts	95kg
Manual parts	14kg
Width	2,460mm
Loading depth	1,735 mm
Height of the gable	300mm
Height above the ground on the back	1015-1,135mm
Height above the ground at the rollers	885-1,005mm
Width in-feed rollers with hydraulic feeding	300mm
Width in-feed rollers with manual feeding	200mm

Introduction



Introduction

We congratulate you on your purchase of the Duun Log Rack ST2440.

The product has a well developed service network for tractor driven machines. This provides safety for service and supply of spare parts and contributes to safe operations in demanding conditions.

All Duun tractor driven machines are constructed and tested in close cooperation with the users in order to produce well functioning and user friendly products.

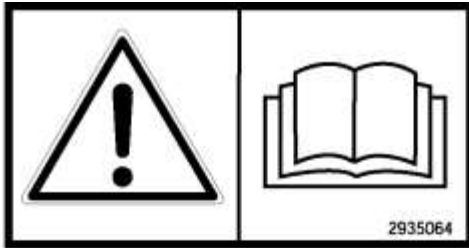
In order to uphold the guarantees and that the machine is to function optimally during use, the indicated descriptions of maintenance and practical use of the machine must be followed.

Please read this manual before you take the machine into use.

Good luck!

Duun Industrier AS
N-7630 Åsen
Tel.: +47 7401 59 00
Fax +47 74 01 59 10
E-mail: post@duun.no
www.duun.no

1



2

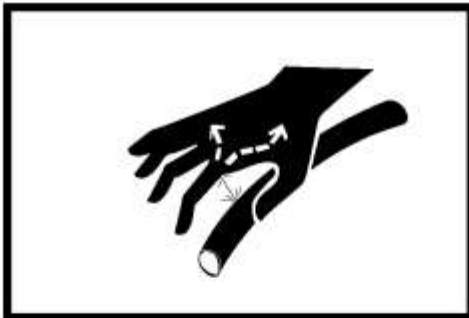


3



10 m

4



5



6



Safety

1. Instruction manual

All operators, mechanics and the owner must be well acquainted with the instruction in this instruction manual before the machine is taken into use.

You should always work with care when you employ agricultural machinery. Read and observe the safety instructions in this binder. Your safety is your responsibility!



Be particularly aware of warnings signs with this symbol it marks measures that must be carried out in order to avoid accidents. The symbol appears in the instruction manual and on warning signs on the machine.

2. Personal protection equipment

You should always wear hearing protection and protective goggles when using the wood machine. Further, you should use protective footwear and sturdy work gloves during handling of the machine and the materials.

3. The safety of the surroundings

Make sure that no-one not concerned are present in the area of work. We emphasize as strongly as possible that only one person is to handle the machine. Nobody is to assist the main operator in the work area - risk of injury!

The machine's rotating parts may cause severe injuries.

If other persons than the operator of the machine are present in the risk zone, the operator is to explain the danger the machine involves.

4. Hydraulic high fluid pressure.

Be careful when you work with hydraulics. Wear eye protection and gloves. Hydraulic oil under great pressure may penetrate the skin and cause serious infections. See a doctor if you have had an injury. Ensure that no-one is standing close by when hydraulic functions are performed.

5. Rotating parts – risk of crushing

The machine's rotating parts may cause severe injuries. The same applies to risk of crushing during operation.

All covers and protective equipment is to be fitted on the machine during use. The user is responsible if an accident occurs as a consequence of defective protection.

Avoid all unnecessary stay in the working area when the machine is in operation.

Never put your hand in behind the protective screen even if the saw chain is in back position.

6. Zero alcohol tolerance

Persons who are under the influence of drink or drugs must not operate the machine. The same applies to tired people who do not have full control over their movements.

7



8



7. Risk of falling objects

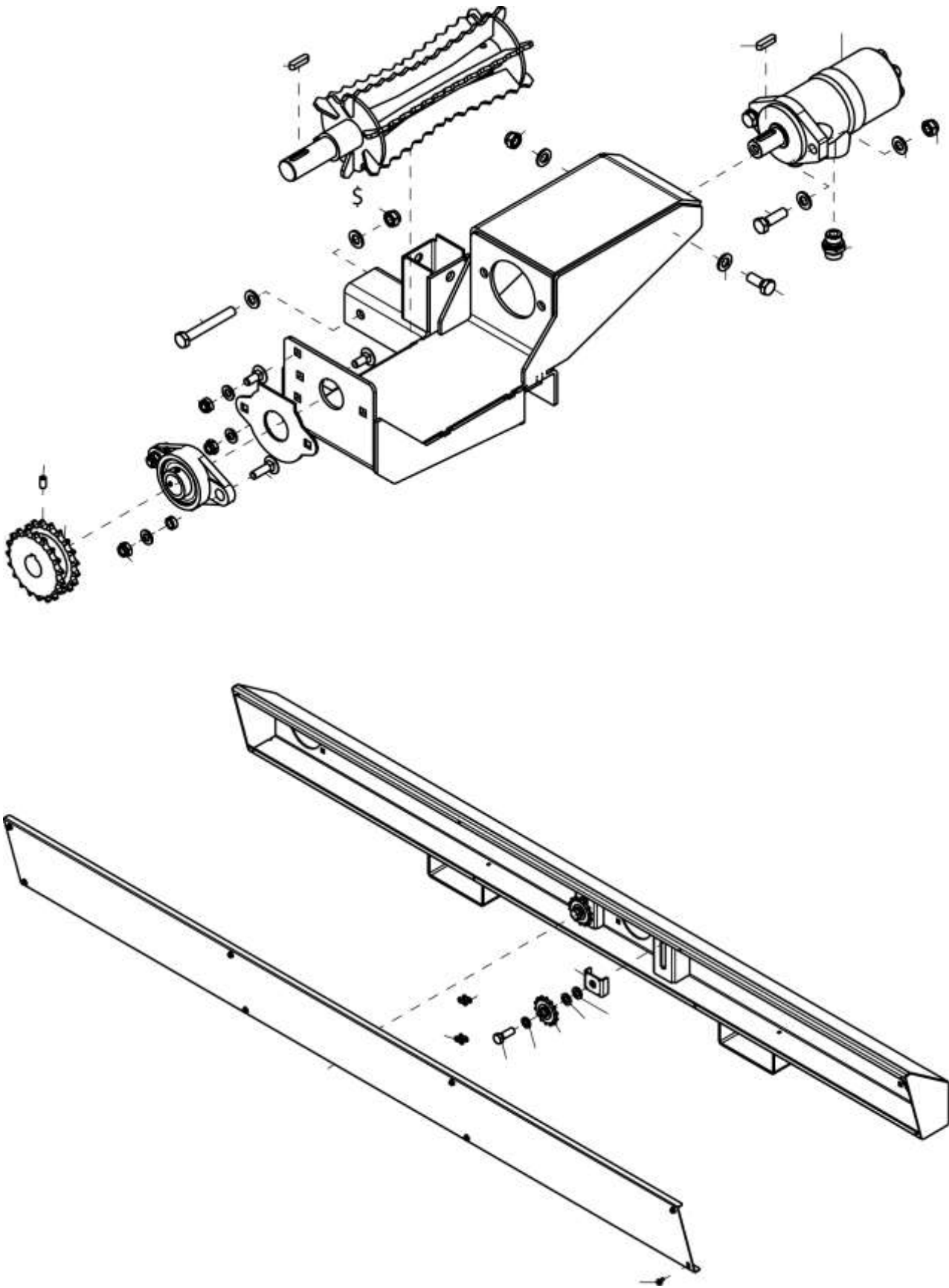
Be particularly aware of the fact that logs may fall down from the rack during use, particularly during loading and feeding on the wood board. We recommend strongly that you use protective footwear during this work.

8. Safe loading

Avoid all presence in the risk zone during loading of the rack. Logs may fall off during loading and cause injuries if you are not attentive during this phase of the work.

You should also avoid loading too much on the board as this increases the risk of fallout during the practical work of feeding to the cutting board.

Supplementary equipment



Supplementary equipment

Hydraulic feeder part number 141409002

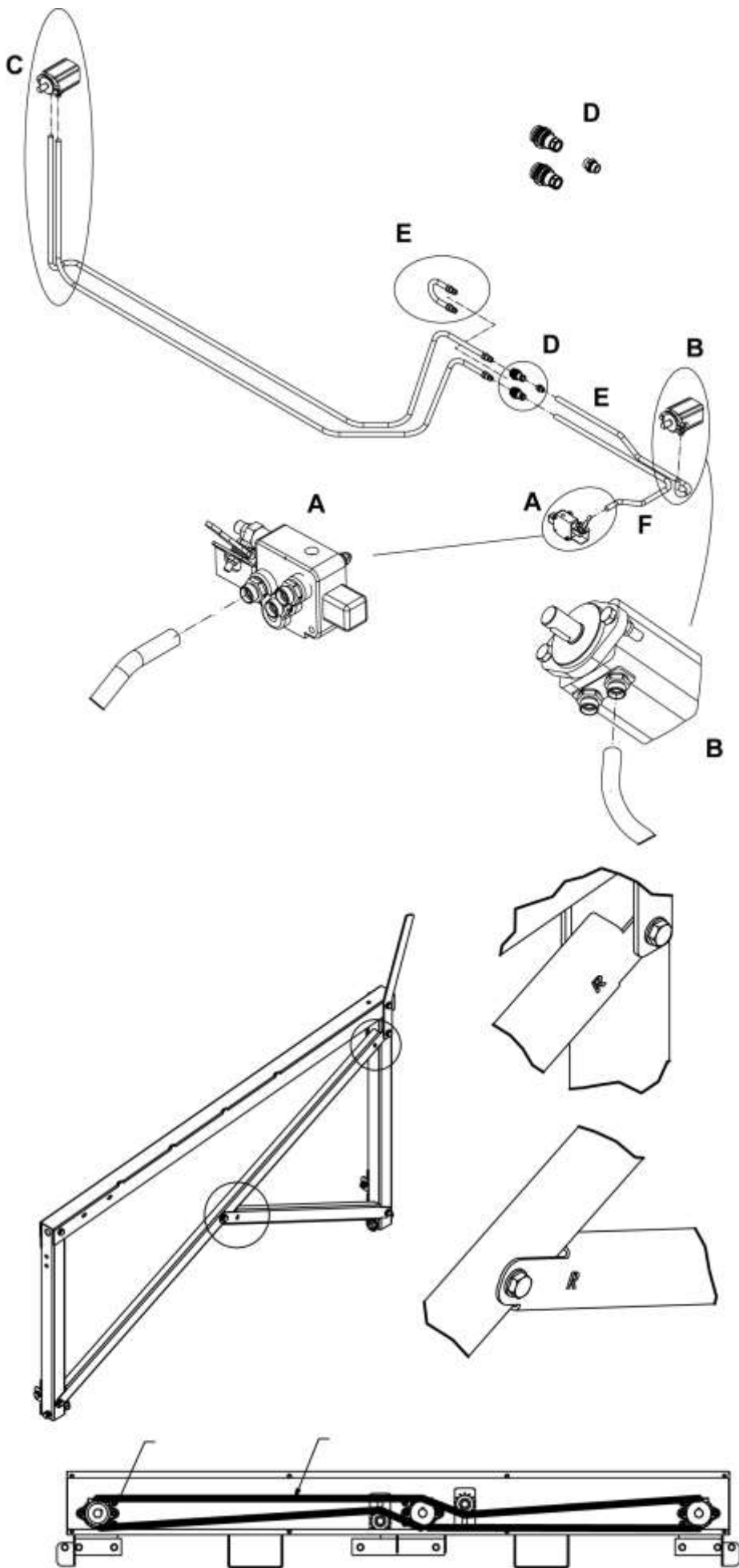
May be fitted on supplied racks or fitted originally on ordering of the feeder board. On fitting of hydraulic feeder, this is serially connected to the feeder conveyor of the wood machine.

New machines have been prepared for connection of hydraulic feeder and connecting parts have been fitted.

For older models, the fitting has to be prepared in the form of drilling a hole in the body for introduction of hydraulic fittings and connecting parts to the machine.

(Part no. 1411302 Hose set connection to hydraulic motor VM100)

For VM360 and VM420, a remote control system of the feeder conveyor part no. 141219020 may be fitted. This is a control that is fitted on the far edge of the feeder conveyor of the wood machine to enable you to stand close by the log rack and drive the conveyor.



Post installation of hydraulic fitting on VM100

Fig A Valve for operation of the feeder conveyor

Fig E Return hose is to be used when the log rack is not in use, part no. 2958183 Valve for controlling the feeder conveyor part no. 2955351 pos. 19 pages 70/71 VM420

Fig B Motor for operation of the feeder conveyor part no.2955513 pos.3 page 50.751 VM420

Fig C Hydraulic operation of the log rack (part no. 1411301) part no. 2955513 pos.7 page 24 log rack

Fig D Female connection on the body.

- Unscrew the lid on the machine board, part no. 1411267 pos.32 pages 43/43 VM100 for gaining access to the installation
- Remove plastic lid, part no. 2245071 pos.49 pages 42/43 and fit the female connection fig. D on the sides of the body. The supplied hexagon nipple is to be fitted on the upper connection. See pages 28/29 Log rack.
- Hydraulic hose E (marked 2958164) should be released from the valve fig. A and moved to the upper female connection fig. D (the hose closest to the wood splitter cradle)
- The supplied hydraulic hose F (marked 2958182) is to be fitted from the lower female connection to the valve fig. A
- The supplied hydraulic hose E (marked 2958183) is to be fitted in loop on the machine when the log rack is not in use.

Assembly instructions log rack ST2440

Duun ST2440 is delivered flat packed from the factory and will require assembly before use. Study the sketches in order to assemble the product correctly. For details regarding the bolted connection, please see the spare part list pages in this document.

Please observe! Some parts are packed inside the chain box.

On fitting the lateral section you are advised to check the orientation of pos. 2, 6, 19 and 20 on page 18. See also the sketch on page 14.

Main points for the order of assembly.

1. Fit the lateral sections and insert the adjustable leg, part no.: 14140018
2. Fit the 4 struts, part no. 14149915 towards the lateral gable. Marked **Right** and **Left**
3. Fit the 2 horizontal struts, part no. 14140013
4. Fit the 3 brackets with rollers (man./ hydr.)
5. Fit the 3 crosspieces. Remember the screws pos.12 page 22 and pos.13 on page 24; only on the hydraulic version.
6. Fit the chain box and fit the chain. The chain is fitted as shown on page 14.

DECLARATION OF CONFORMITY

Responsible person

Name: Karl Martin Eggen
Position: CEO
Company name: Duun Industrier as
Address: N-7630 Åsen
Norway
Telephone: +47 74 01 59 00

Person responsible for the technical documentation: Rolf Even Duun

Declares that the following machine: ST2440 Log rack
Manufacturer: Duun Industrier as
Type: Duun Log rack ST2440
is in accordance with:

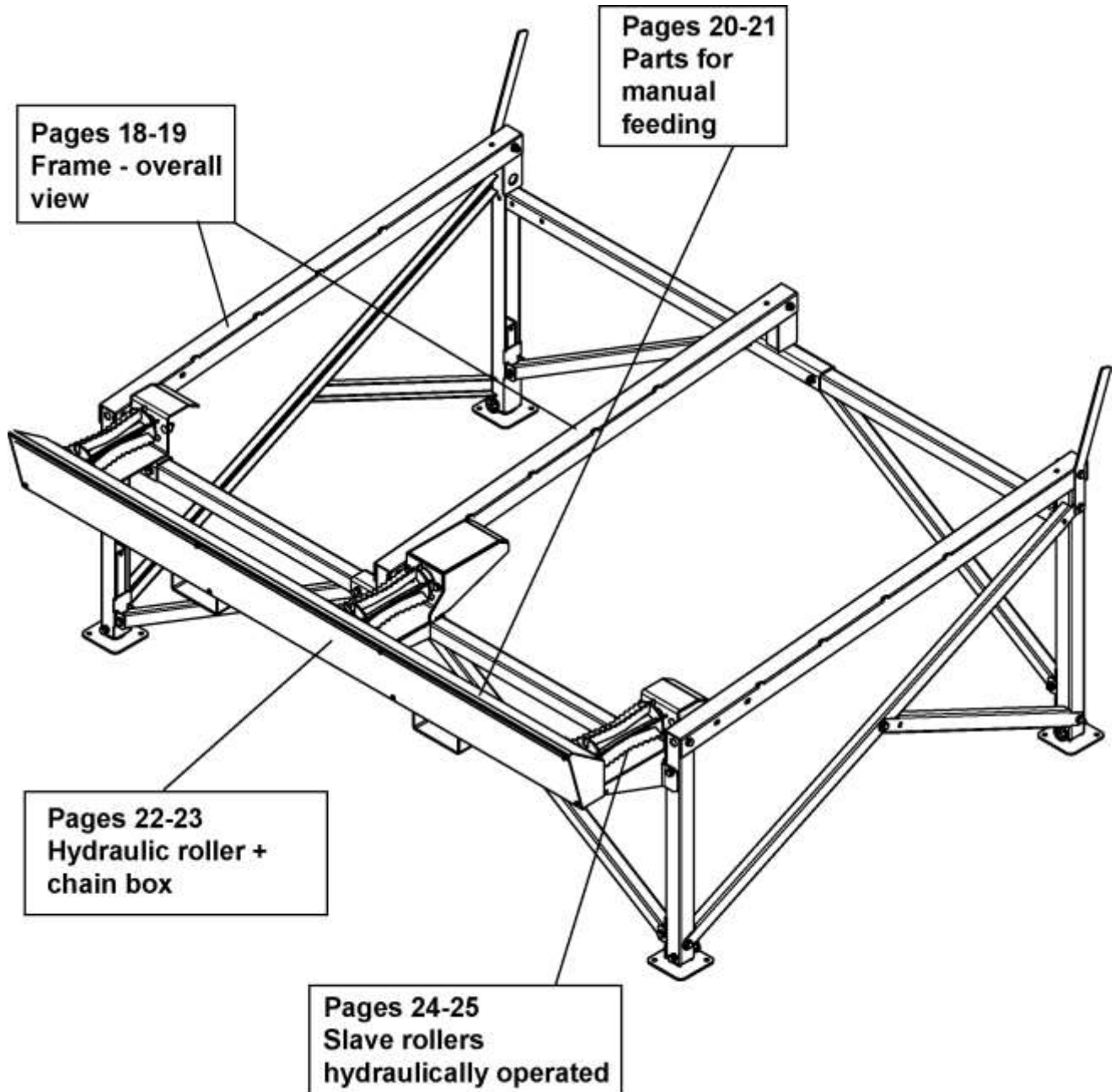
Directive 2006/42/EC Machinery

Signed by:

  Duun
Industrier as

Karl Martin Eggen

Åsen, 15.09.2020

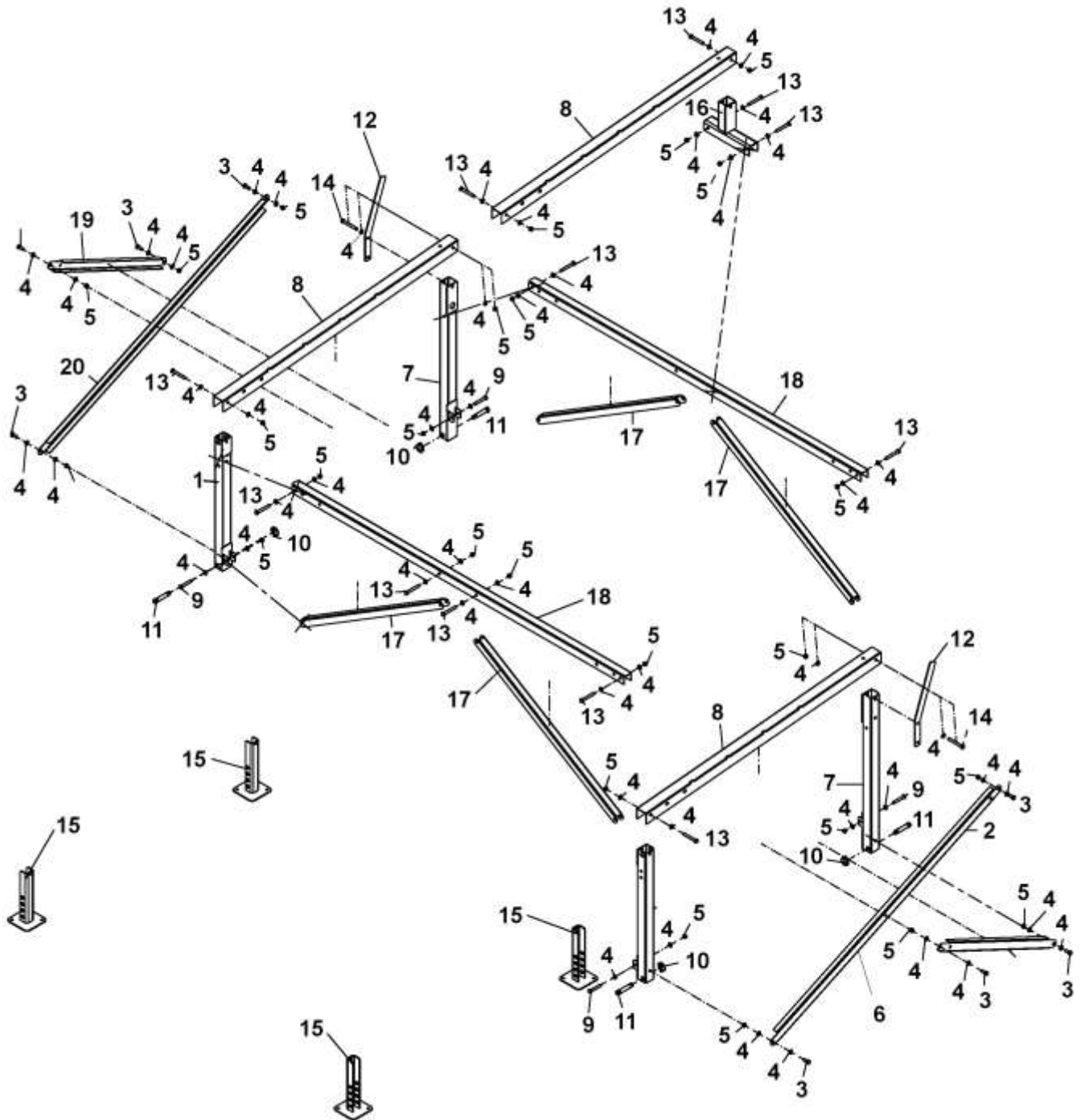




Group: 141-3-

Frame and overall view

Edition: 1.2010





Spare parts catalogue

DUUN

Log Rack ST2440

Group: 141-3-	Frame and overall view	Edition: 1.2010
---------------	------------------------	-----------------

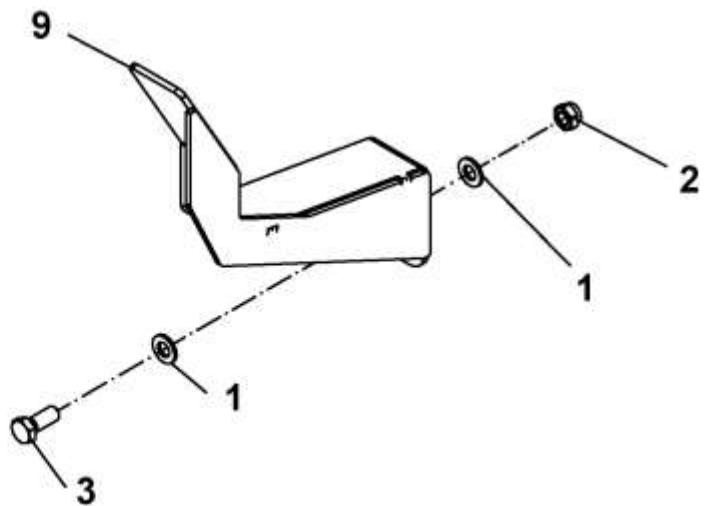
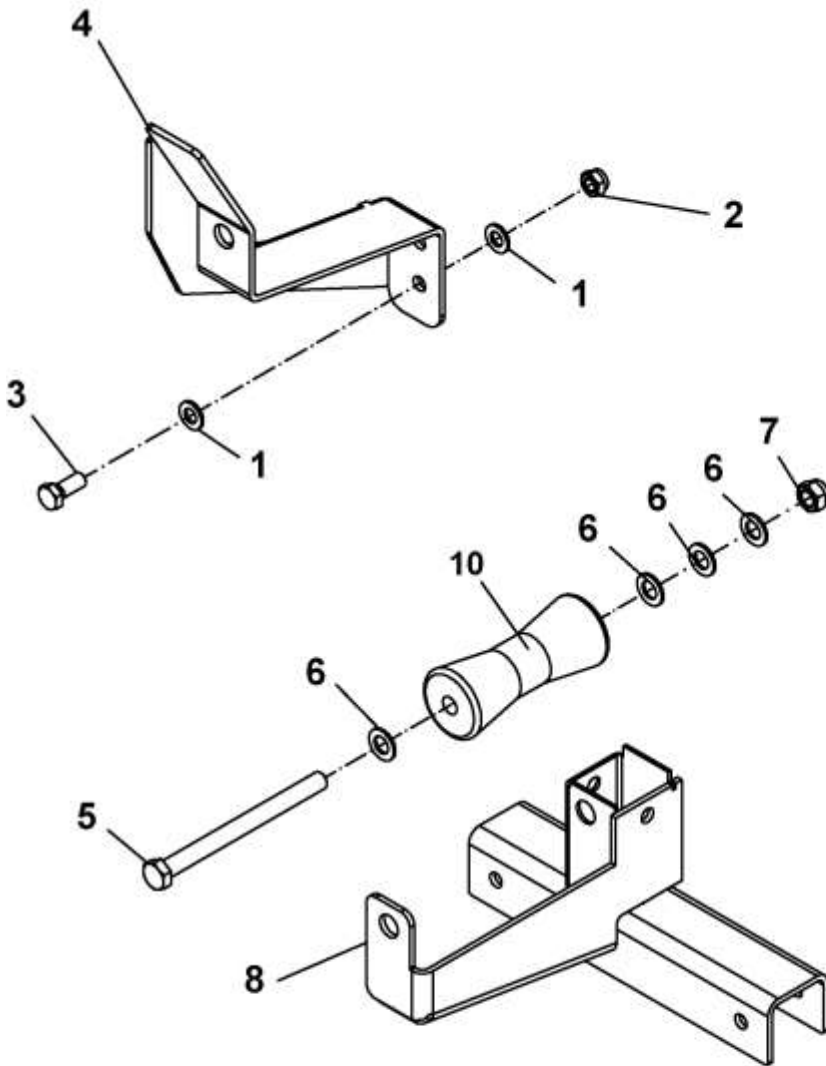
Pos.No	Quantity	Designation	Part No.	Comment
1	2	Leg front	14140035	
2	1	Strut right hand side long	14140016	
3	8	Hexagon screw M12-30 galv.	2422348	
4	52	Washer M12 galv.	2531069	
5	26	Hexagon nut M12 locking galv.	2483611	
6	1	Strut right hand side short	14140017	
7	2	Leg back	14140036	
8	3	Crosspiece	14140033	
9	4	Screw hexagon M12x175 8.8 galv.	2422362	
10	4	Locking pin Ø10x40	2556142	
11	4	Top stay bolt Ø 19x70	2526321	
12	2	Pole	1411378	
13	12	Hexagon screw M12x90 galv 8.8.	2422364	
14	2	Screw hexagon M10x100 8.8 galv.	2422365	
15	4	Leg adjustable	14140018	
16	1	Bracket rear	14140009	
17	4	Strut front/rear	14140015	
18	2	Horizontal strut	14140013	
19	1	Strut left hand side short	14140007	
20	1	Strut left hand side long	14140008	



Group: 141-3-

Parts for manual feeding

Edition: 1.2010





Spare parts catalogue

DUUN

Log Rack ST2440

Group: 141-3-	Parts for manual feeding	Edition: 1.2010
---------------	--------------------------	-----------------

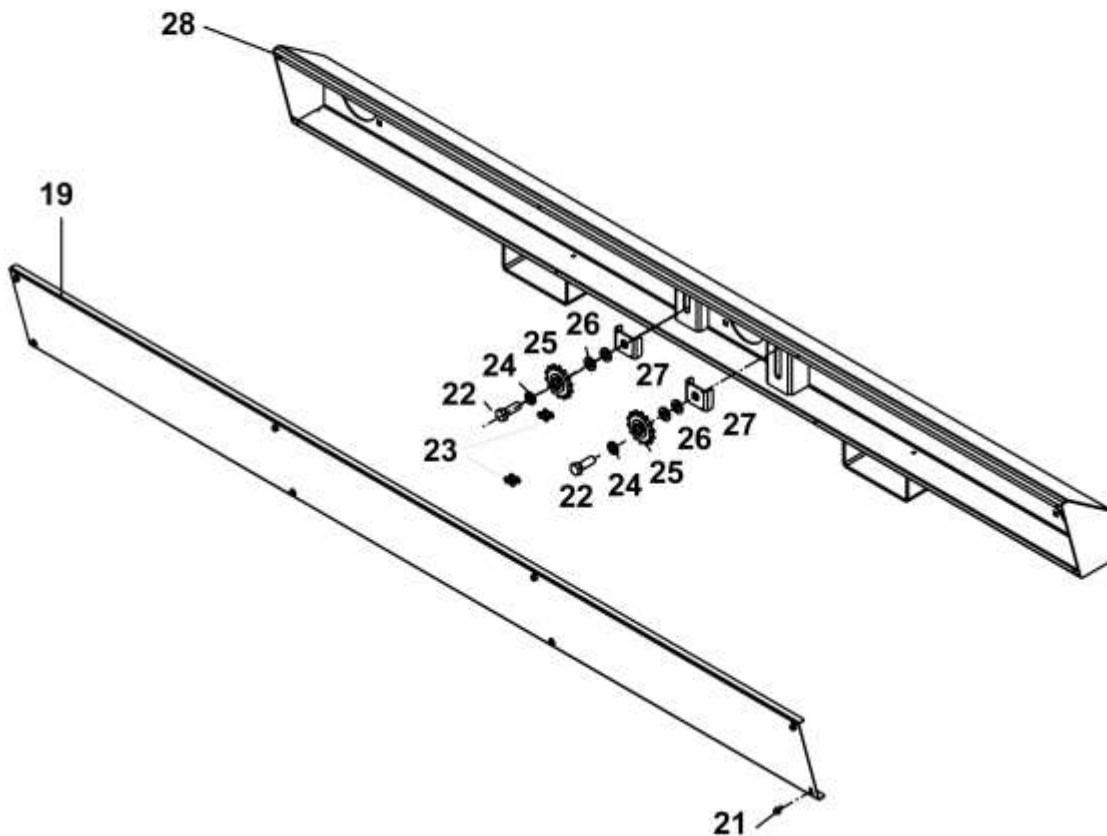
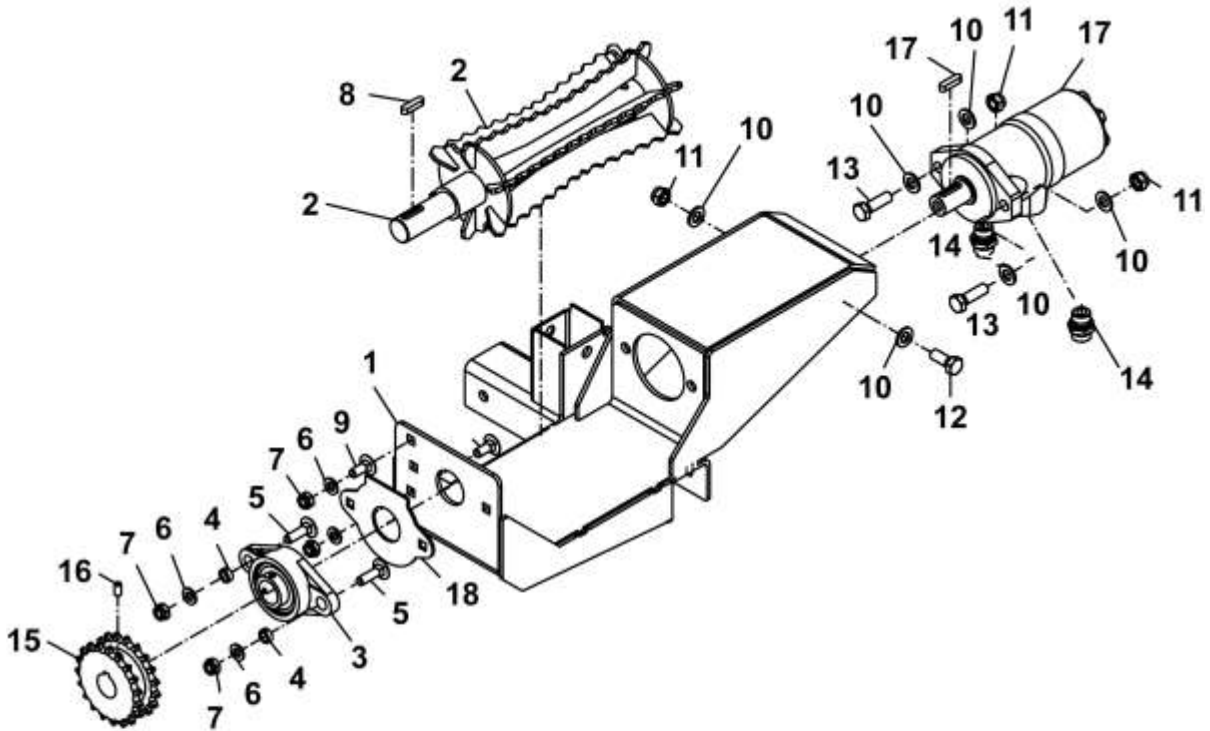
Pos.No	Quantity	Designation	Part No.	Comment
1	4	Washer M12 galv.	2531069	
2	2	Hexagon nut M12 locking galv.	2483611	
3	2	Hexagon screw M12x30 galv. 8.8	2422348	
4	1	Cage manual roller left hand side	14140026	
5	3	Screw hexagon M20x240 8.8 galv.	2422597	
6	12	Washer M20 galv.	2531086	
7	3	Hexagon nut M20 locking galv.	2483615	
8	1	Centre roller cage manual	14140020	
9	1	Cage manual roller right hand side	14140027	
10	3	Supporting roller Ø60/84 x L200	2245031	



Group: 141-3-

Hydraulic roller + chain box

Edition: 1.2010





Spare parts catalogue

DUUN

Log Rack ST2440

Group: 141-3-	Hydraulic roller + chain box	Edition: 1.2010
---------------	------------------------------	-----------------

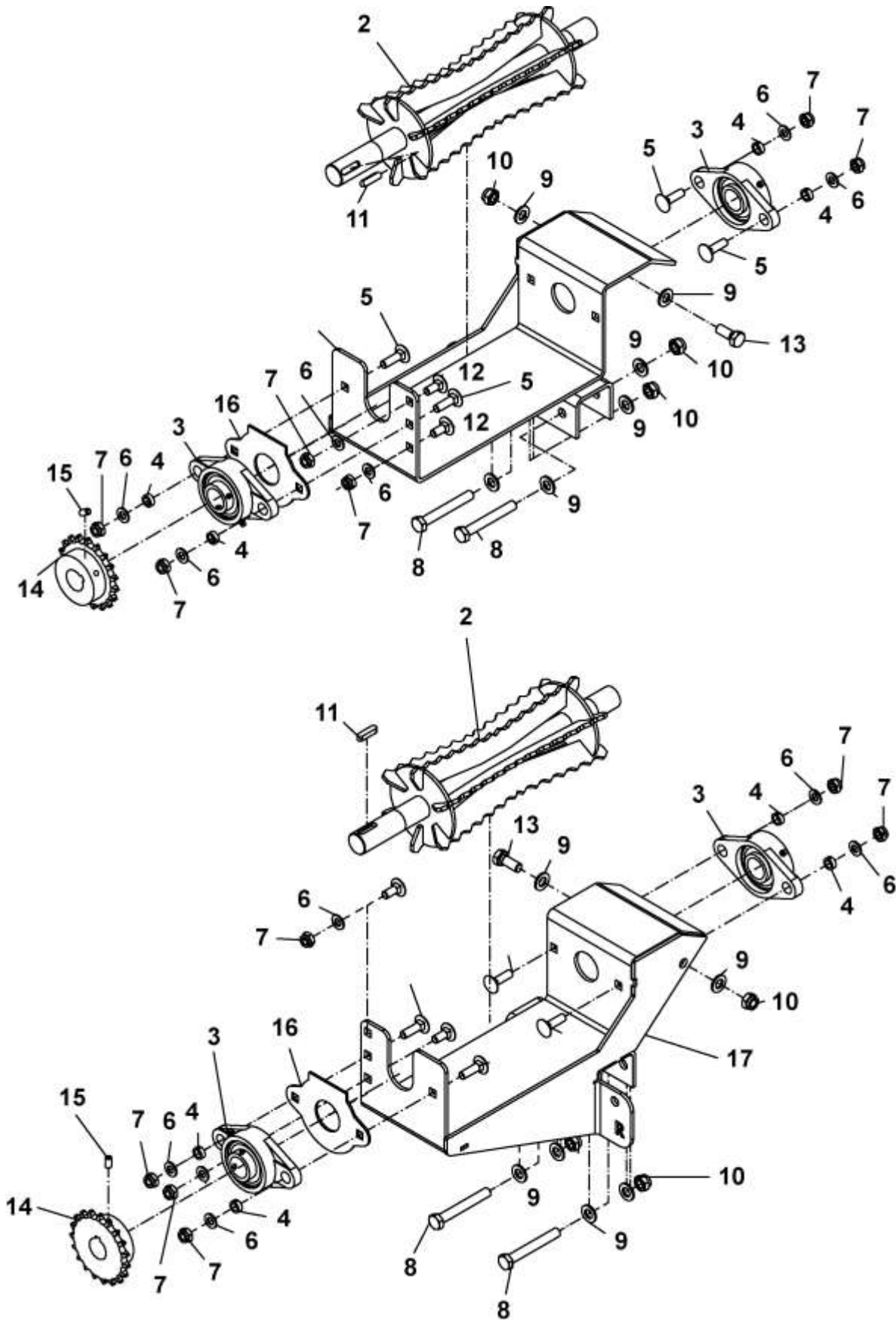
Pos.No	Quantity	Designation	Part No.	Comment
1	1	Bracket bridle roll.	14140024	
2	1	Feeder roller bridle roll	14140025	
3	1	Flange bearing UCFL206 30mm	2954171	
4	2	Bushing	1411167	
5	2	Screw locking M10x35 8.8 galv.DIN603	2344332	
6	4	Washer M10 galv.	2531060	
7	4	Hexagon nut M10 locking galv.	2483610	
8	1	Cotter 8x7 L32 DIN 6885A	2115129	
9	2	Locking screw M10x25 galv. 8.8.	2344330	
10	6	Washer M12 galv.	2531069	
11	3	Hexagon nut M12 locking galv.	2483611	
12	1	Hexagon screw M12-30 galv.	2422348	
13	2	Hexagon screw M12-40 galv.	2422352	
14	2	Hexagon nipple GEK BSP 1/2" L15ED	2957768	
15	1	Chain wheel 19t 5/8" double Ø30	2964169	
16	1	Headless screw M8x16 St DIN916.	2473239	
17	1	Hydraulic motor 300ccm	2955513	
	1	Cotter for hydraulic motor	2115127	supplied with the
motor				
18	1	Cover plate	14140034	
19	1	Cover for chain box	14140012	
21	8	Hexagon screw with flange M6x12 galv.	2451197	
22	2	Hexagon screw M16x45 galvanized 8.8.	2422491	
23	2	Chain lock 5/8"	2963149	supplied with the
chain				
24	2	Spring washer M16 galv.	2534078	
25	2	Chain tensioning wheel 5/8" 14t.	2954116	
26	4	Washer M16 galv.	2531078	
27	2	Nut plate	1261179	
28	1	Chain box	14140032	
	1	Chain 5/8" 165 chain links with chain lock	2963107	
	1	Chain 5/8" 143 chain links with chain lock	2963103	
	2	CE tag 90x48 Risk of crushing	2935069	
	1	DUUN ST2440 nameplate H-65mm	2935149	
	2	1/2" hose R2T L-4500 Log Rack	2958184	
	2	Hydraulic gasket 1/2"	2957861	
	2	Quick release coupling 1/2"ISO male part	2957860	



Group: 141-3-

Slave rollers hydraulically operated

Edition: 1.2010





Spare parts catalogue

DUUN

Log Rack ST2440

Group: 141-3-	Slave rollers hydraulically operated	Edition: 1.2010
---------------	--------------------------------------	-----------------

Pos.No	Quantity	Designation	Part No.	Comment
1	1	Bracket hydraulic roller left hand side	14140021	
2	2	Feeder roller slave	14140023	
3	4	Flange bearing UCFL 206 30mm	2954171	
4	8	Bushing	1411167	
5	8	Locking head screw M10x35 galv. 8.8	2344332	
6	12	Washer M10 galv.	2531060	
7	12	Hexagon nut M10 locking galv. 8.8	2483610	
8	4	Hexagon screw M12x90 galv 8.8.	2422364	
9	12	Washer M12 galv.	2531069	
10	6	Hexagon nut M12 locking galv. 8.8	2483611	
11	2	Cotter 8x7 L32 DIN 6885A	2115129	
12	4	Locking head screw M10x25 galv. 8.8	2344330	
13	2	Hexagon screw M12x30 galv 8.8.	2422348	
14	2	Chain wheel 19t 5/8 with set screw M8	2964166	
15	2	Headless screw M8x16 DIN 916	2473239	
16	2	Cover plate	14140034	
17	1	Bracket for roller right hand side	14140022	



Spare parts catalogue

DUUN

Log Rack ST2440

Number index

Edition: 1.2010

Part No	Designation	Pos.No	Ill. page	Text page
1261179	Nut plate	27	22	23
1411167	Bushing	4	22	23
1411167	Bushing	4	24	25
1411378	Pole	12	18	19
2115127	Cotter for hydraulic motor		22	23
2115129	Cotter 8x7 L32 DIN 6885A	8	22	23
2115129	Cotter 8x7 L32 DIN 6885A	11	24	25
2245031	Supporting roller Ø60/84 x L200	10	20	21
2344330	Locking screw M10x25 galv. 8.8.	9	22	23
2344330	Locking head screw M10x25 galv. 8.8	12	24	25
2344332	Screw locking M10x35 8.8 galv.DIN603	5	22	23
2344332	Locking head screw M10x35 galv. 8.8	5	24	25
2422348	Hexagon screw M12-30 galv.	3	18	19
2422348	Hexagon screw M12x30 galv. 8.8	3	20	21
2422348	Hexagon screw M12-30 galv.	12	22	23
2422348	Hexagon screw M12x30 galv 8.8.	13	24	25
2422352	Hexagon screw M12-40 galv.	13	22	23
2422362	Screw hexagon M12x175 8.8 galv.	9	18	19
2422364	Hexagon screw M12x90 galv 8.8.	13	18	19
2422364	Hexagon screw M12x90 galv 8.8.	8	24	25
2422365	Screw hexagon M10x100 8.8 galv.	14	18	19
2422491	Hexagon screw M16x45 galvanized 8.8.	22	22	23
2422597	Screw hexagon M20x240 8.8 galv.	5	20	21
2451197	Hexagon screw with flange M6x12 galv.	21	22	23
2473239	Headless screw M8x16 St DIN916.	16	22	23
2473239	Headless screw M8x16 DIN 916	15	24	25
2483610	Hexagon nut M10 locking galv.	7	22	23
2483610	Hexagon nut M10 locking galv. 8.8	7	24	25
2483611	Hexagon nut M12 locking galv.	5	18	19
2483611	Hexagon nut M12 locking galv.	2	20	21
2483611	Hexagon nut M12 locking galv.	11	22	23
2483611	Hexagon nut M12 locking galv. 8.8	10	24	25
2483615	Hexagon nut M20 locking galv.	7	20	21
2526321	Top stay bolt Ø 19x70	11	18	19
2531060	Washer M10 galv.	6	22	23
2531060	Washer M10 galv.	6	24	25
2531069	Washer M12 galv.	4	18	19
2531069	Washer M12 galv.	1	20	21
2531069	Washer M12 galv.	10	22	23
2531069	Washer M12 galv.	9	24	25
2531078	Washer M16 galv.	26	22	23



Spare parts catalogue

DUUN

Log Rack ST2440

Number index

Edition: 1.2010

Part No	Designation	Pos.No	Ill. page	Text page
2531086	Washer M20 galv.	6	20	21
2534078	Spring washer M16 galv.	24	22	23
2556142	Locking pin Ø10x40	10	18	19
2935069	CE tag 90x48 Risk of crushing		22	23
2935149	DUUN ST2440 nameplate H-65mm		22	23
2954116	Chain tensioning wheel 5/8" 14t.	25	22	23
2954171	Flange bearing UCFL206 30mm	3	22	23
2954171	Flange bearing UCFL 206 30mm	3	24	25
2955513	Hydraulic motor 300ccm	17	22	23
2957768	Hexagon nipple GEK BSP 1/2" L15ED	14	22	23
2957860	Quick release coupling 1/2"ISO male part		22	23
2957861	Hydraulic gasket 1/2"		22	23
2958184	1/2" hose R2T L-4500 Log Rack		22	23
2963103	Chain 5/8" 143 chain links with chain lock		22	23
2963107	Chain 5/8" 165 chain links with chain lock		22	23
2963149	Chain lock 5/8"	23	22	23
2964166	Chain wheel 19t 5/8 with set screw M8	14	24	25
2964169	Chain wheel 19t 5/8" double Ø30	15	22	23
14140007	Strut left hand side short	19	18	19
14140008	Strut left hand side long	20	18	19
14140009	Bracket rear	16	18	19
14140012	Cover for chain box	19	22	23
14140013	Horizontal strut	18	18	19
14140015	Strut front/rear	17	18	19
14140016	Strut right hand side long	2	18	19
14140017	Strut right hand side short	6	18	19
14140018	Leg adjustable	15	18	19
14140020	Centre roller cage manual	8	20	21
14140021	Bracket hydraulic roller left hand side	1	24	25
14140022	Bracket for roller right hand side	17	24	25
14140023	Feeder roller slave	2	24	25
14140024	Bracket bridle roll.	1	22	23
14140025	Feeder roller bridle roll	2	22	23
14140026	Cage manual roller left hand side	4	20	21
14140027	Cage manual roller right hand side	9	20	21
14140032	Chain box	28	22	23
14140033	Crosspiece	8	18	19
14140034	Cover plate	18	22	23
14140034	Cover plate	16	24	25
14140035	Leg front	1	18	19
14140036	Leg back	7	18	19